

Deaths

Headstones & Monuments

We'll help you create a special and unique monument. Design limited only to your imagination.

Next visit to Wairoa:

Monday, February 17
Visiting times:
From 10 am - 3 pm
Vista Motor Lodge, Unit 28 (next to reception), Bridge Street

- Competitive Pricing
- Deal Direct

STONEHAVEN MEMORIALS & GRANITE SUPPLIES LTD

Gisborne Opening Times:
From 9 am - 4.30 pm (or by appointment outside these hours)
Ph: (06) 867 1800 or 021 751 972 (Opposite Taruheru Cemetery) Nelson Road • GISBORNE
www.stonehaven.net.nz

Add That Special Touch To Your Family Notice



Phone Classifieds on 838 7194

In Memoriam

MIHAERE, Te Iriwaho Edith (Didi).

January 11, 1938 - December 26, 2018.

You left us 1 year ago and all we can do is remember the memories.

We miss you but know that you must go on without us.

All your children are stronger and mokopuna will never forget you.

Miss you Mum. From Emma and Murray and the rest of the whanau.

614 x9

SMITH, Marcine.

Every sparkle at night every bright cloud in the sky

every sunset there is reminds us you are always close by

12 years this Sunday our angel above

Love, us

617 x9

SMITH, Marcine.

We hold a special place in our hearts for you our nanny and always wish you were here with us.

love always, the three tinks Milly, Maddy & Micah

618 x9

Bereavement Thanks

KAHUKURA, Pango Te Hei.

On behalf of my whanau we would like to thank all those for their support at the sudden loss of our sister. To those who gave of their time willingly, thank you Tuss, you made things so much easier for me during the time of need. To the Whakaki Marae whanau, the paepae, Trina and the Ringawera thank you so much. To those who worked at the urupa in the pouring rain and escorting us from the bridge to the urupa on the quads and trailer which were kindly loaned to us on the day from the Whakaki Lake Trust. Thank you Richard. A big thank you to Matenga Hapi, for your guidance and for my sister's final farewell. Thanks to Jackie Te Amo who assisted Matenga. A big thank you to those who gave food, vegies, koha and most importantly, your aroha. Also my thanks to Ian Lulu and Ra for your continuing support. Smith Whanau.

612 x9



Problems? Questions?

FREE & CONFIDENTIAL

Or do you just need to talk?

OPEN
Monday - Friday
9.30am - 12.30pm
Next to the Library,
Marine Parade

Phone 838 7268



WAIROA FINANCIAL LITERACY SERVICE INC

90 Queen Street with Opening Hours: Tuesday to Thursday 9am to 4pm

Please phone 06 838 6921 for an appointment.

BIG OR SMALL



Find Homes For All Your Needs in



Sell your livestock here!

Call today to discuss options 838 7194



Public Notices



Shaun the Sheep: Farmageddon

Kids & Family, Animated (G) 87mins

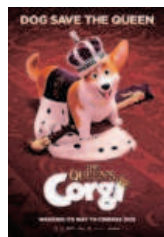
Fri 10, 2.00pm Premiere Sat 11, 11.00am



Sorry We Missed You

Drama (M) 101mins

Sat 11, 8.00pm Premiere Sun 12, 2.00pm



The Queens Corgi

Kids & Family, Animated (PG) 92mins

Wed 15, 2.00pm



Jumanji Next Level

Action, Comedy (PG) 123mins

Sun 12, 8.00pm Wed 15, 5.30pm



The Good Liar

Thriller, Drama (R13) 110mins

Fri 10, 8.00pm Final



Playing With Fire

Kids & Family, Comedy (PG) 96mins

Fri 10, 5.30pm Premiere Sat 11, 2.00pm



Little Women

Drama, Romance (G) 135mins

Wed 08, 5.30pm Thu 09, 5.30pm Sun 12, 5.00pm Wed 15, 8.00pm



The Addams Family

Kids & Family, Animated (PG) 87mins

Thu 09, 2.00pm



Star Wars: The Rise of Skywalker

Sci Fi (M) 142mins

Wed 08, 8.00pm Thu 09, 8.00pm Final



Frozen 2

Animated, Kids & Family (PG) 102mins

Wed 08, 2.00pm Sat 11, 5.00pm Final

The GAIETY Cinema & Theatre
08 - 15 Jan All Tickets \$10
BROUGHT TO YOU BY

ADVERTISING TERMS AND CONDITIONS

1. In accepting an advertisement for publication, and in publishing it we are doing so in consideration of and relying on the advertiser's express warranty, the truth of which is essential: (a) That the advertisement does not contain anything that is misleading or deceptive or likely to mislead or deceive or which otherwise breaches the Fair Trading Act 1986. That is defamatory or indecent or which otherwise offends against generally accepted community standards. That infringes a copyright or trademark or otherwise infringes any intellectual or industrial property rights. That breaches any provision of any statute, regulation, by-law or other rule or law, and (b) That the advertisement complies in every way with the Advertising Codes of Practice issued by the Advertising Standards Authority Inc. ("ASA") and with every other code or industry standard relating to advertising in New Zealand, and (c) Publication of the advertisement will not give rise to any liability on our part or in a claim being made against us.
2. The advertiser agrees to indemnify us against all losses or costs arising directly or indirectly from any breach of those warranties by the advertiser and from any costs incurred in our making corrections or amendments in accordance with the terms that follow.
3. We may refuse to publish, or withdraw an advertisement from publication without having to give a reason.
4. We reserve the right to alter, abbreviate or refuse to publish any advertisement if, in our sole opinion, it would be undesirable to publish it. We may adjust material to conform to our technical specifications or for other genuine reasons as long as we do so using reasonable care.
5. We may publish the advertisement on the next available day if there is an error or delay in publication of the advertising as booked.
6. The guarantees contained in the Consumer Guarantees Act, 1993 are excluded where the advertiser acquires, or holds himself out as acquiring goods or services from us for the purposes of a business.
7. The advertiser must tell us as soon as possible if there is an error or omission in any advertisement the advertiser has placed. We will not be liable for any indirect or consequential loss (which includes loss of revenue or profit) from an error or omission or failure to publish and if we are found to have any direct liability for any circumstance that liability is limited to the cost of the space of the advertisement. We accept no responsibility for any error in advertisements placed by any telecommunications method. We will not be liable for errors or omissions arising from the advertiser having given us incorrect instructions, or in any circumstances where a proof has been submitted and approved by the Advertiser.
8. All advertisements created or set and published by The Wairoa Star remain the property of The Wairoa Star.
9. If payment for advertising is not made by due date the advertiser will be liable for interest at market rates and all costs of recovery commissions and collection fees.
10. The Wairoa Star is subject to the New Zealand Press Council. Complaints are to be first directed in writing to editorial@wairoastar.co.nz. If unsatisfied, the complaint may be referred to the Press Council, PO Box 10-879, The Terrace, Wellington 6143. ISSN 1170-0971 (Print). ISSN 2324-1802 (Online).

Polly want a bargain?



Find great specials, deals and discounts in today's Wairoa Star



Weekend Emergency Services

Fire - Police Ambulance

Dial 111

Tell the operator the emergency service you want. Wait until the service answers, then give them the address including the name of the town where help is needed and other necessary information. Emergency calls from a 'Public Phone Card' telephone are FREE!

Weekend Doctors

Queen Street Practice (Wairoa Hospital)
Saturday and Sunday: 3 pm - 4 pm.
Surgery phone 838 9727.
After hours phone Ward 838 9714.
No appointments necessary, phone only if Doctor required urgently.

Weekend Dentist

Dentiq
Locke Street.
After hours phone 838 7144.

Health HB

For all emergency on call and duty doctors for week days and weekend duty check out www.healthhb.co.nz

Other Services

- **Police:** Wairoa 838 8345. Tuai 837 3824.
- **Search and Rescue:** Contact Police.
- **Wairoa District Council:** Emergency and after hours contact 838 7309 (24 hours) for problems with noise, water supply, civil defence, animal control, sewerage system, local roading.
- **Wairoa Veterinary Service:** After hours emergency service phone Wairoa 838 6099.
- **Coast Vet Ltd:** Phone 838 4053.
- **Wairoa Hospital Visiting Hours:** 2 pm - 7 pm.
- **Mental Health:** Phone 0800 112 334.
- **Cancer Support Group:** Phone 027 717 8949.
- **Wairoa Survivors Support Group:** Phone 838 7390, Shirley 838 8410.
- **Wairoa Victim Support Group:** Phone 838 8345 or 838 3521.
- **Department Of Child, Youth and Family Services:** For all notifications/referrals/emergency calls between the hours of Monday - Friday, 8 am and 5 pm phone 0508 FAMILY or 0508 326 459. For all EMERGENCY after hour calls, phone 0508 326 459.